

This presentation premiered at WaterSmart Innovations

watersmartinnovations.com



Deneen Powell Atelier, Inc.



*Water
Conservation Gardens*































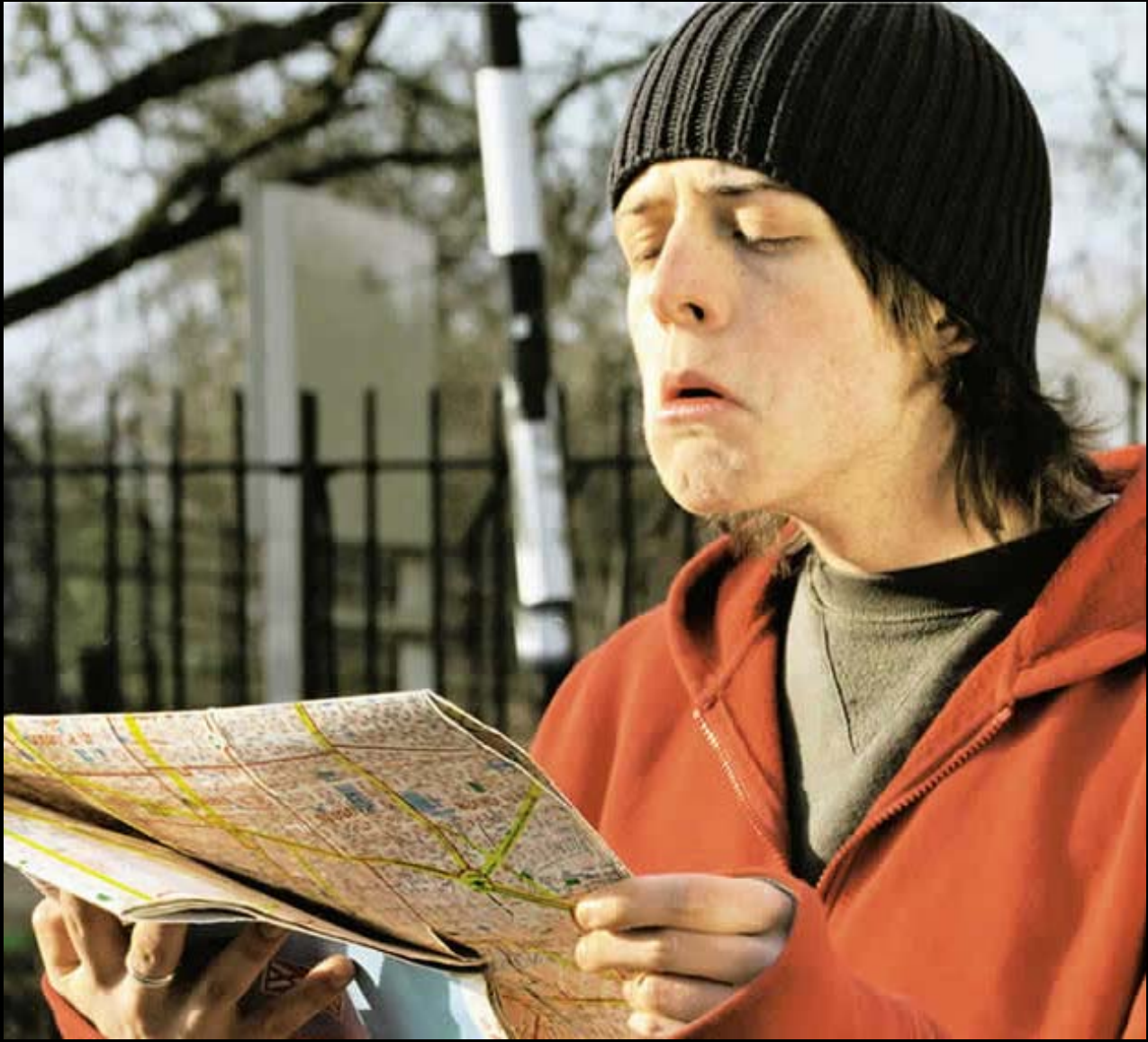
























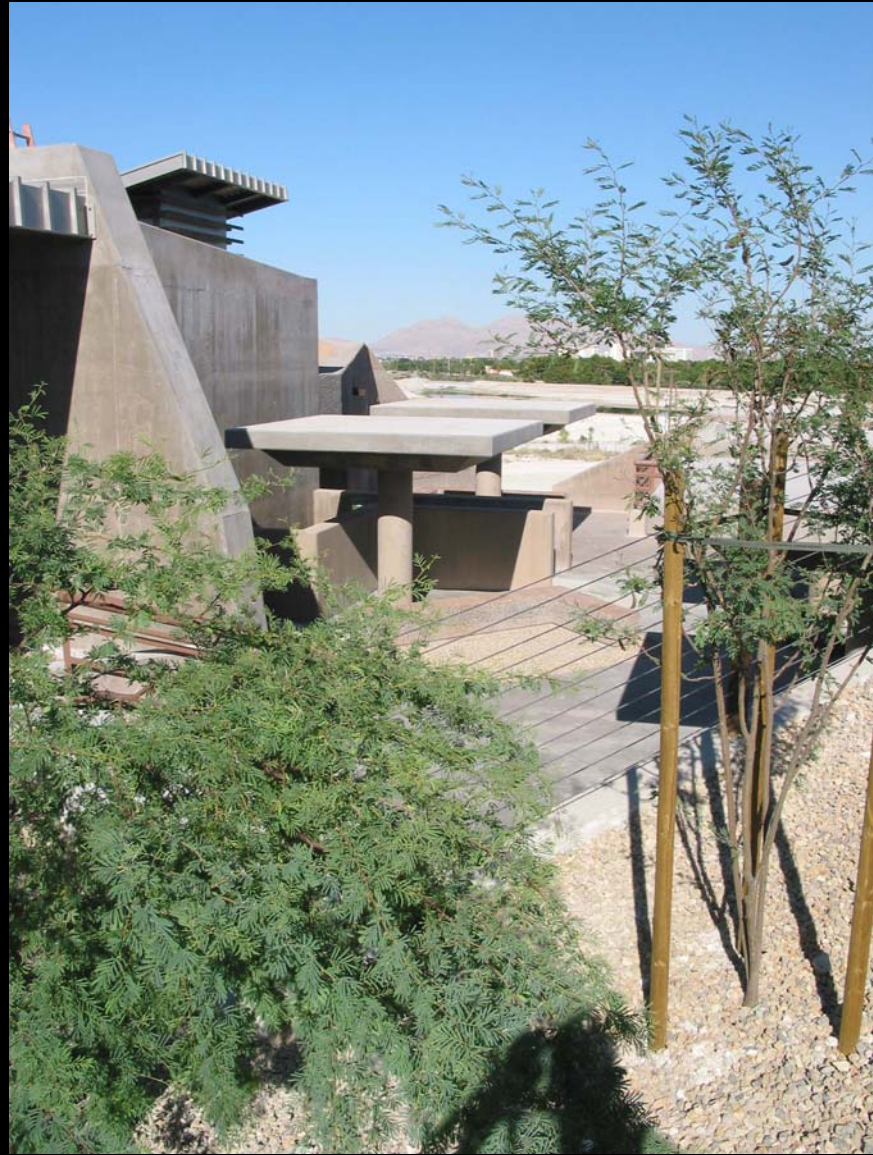










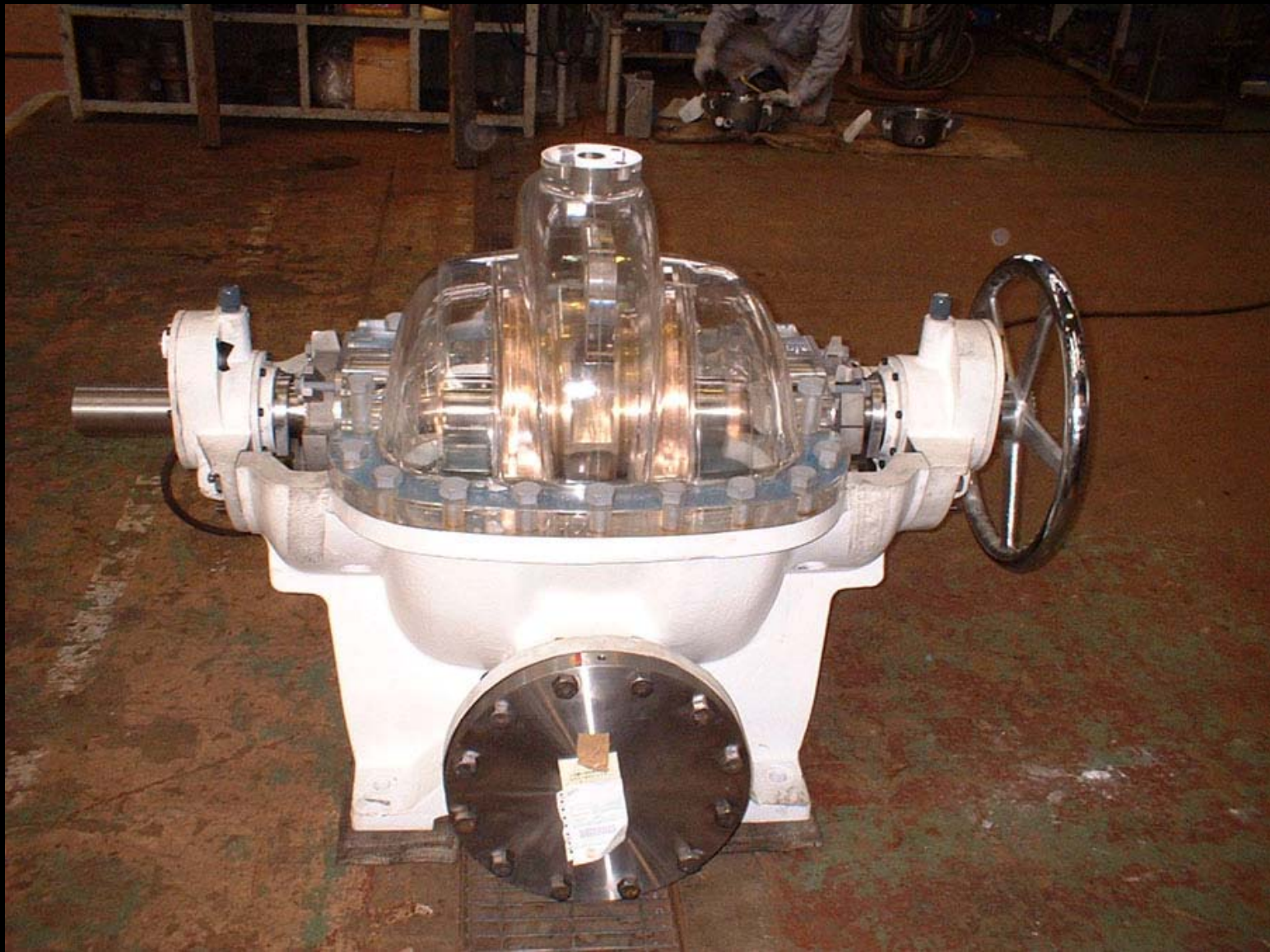


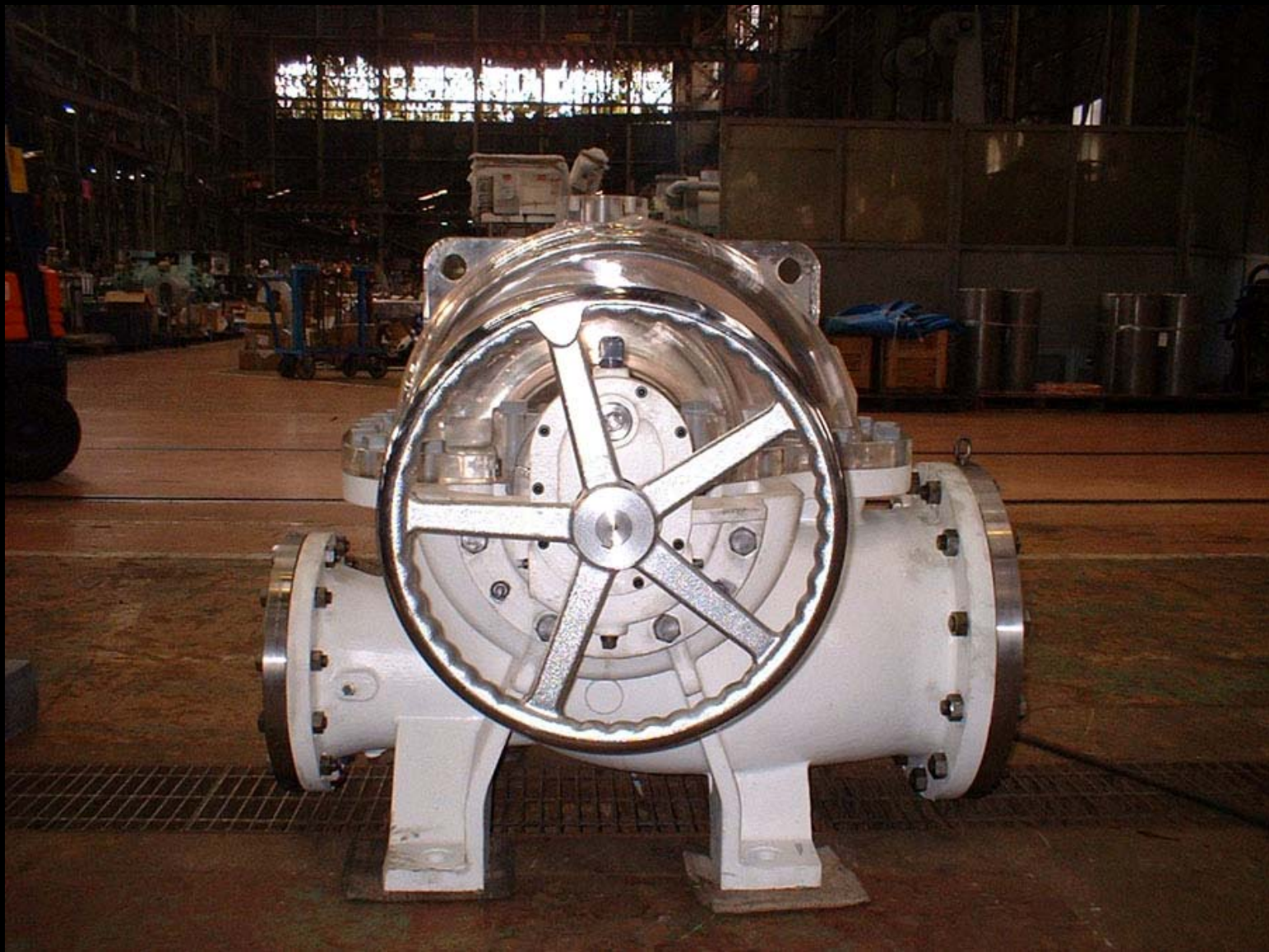












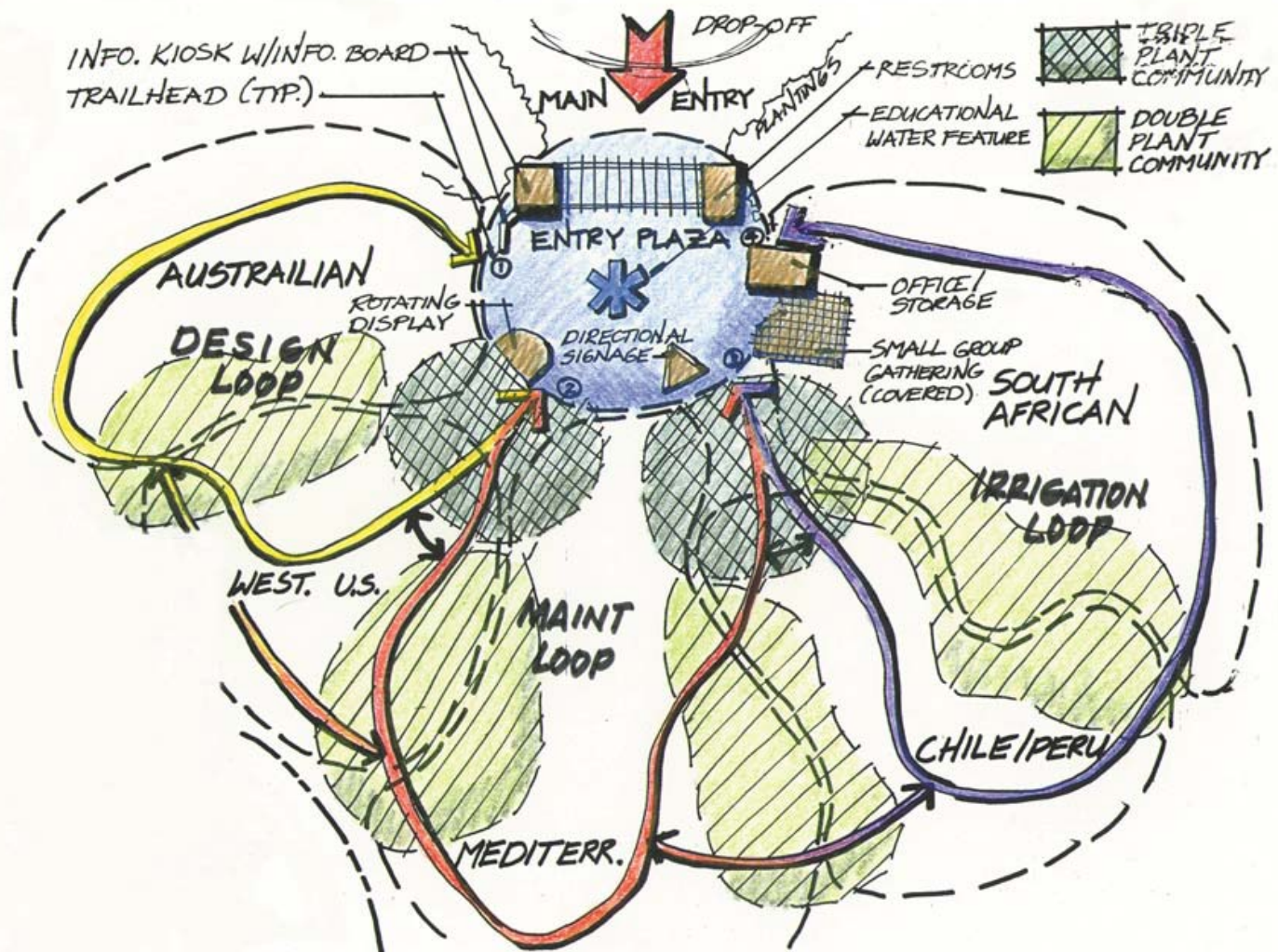












ENTRY / TRAIL LOOPS / PLANT COMM. 11/1/92















Design Guidelines



A well-designed landscape looks great and works well. It enhances the natural plants, structures and buildings, and provides a place of refuge and enjoyment for all. The goal is to create a landscape that is both functional and beautiful.

Design by thinking about your site and the people who use it. The goal is to create a landscape that is both functional and beautiful.

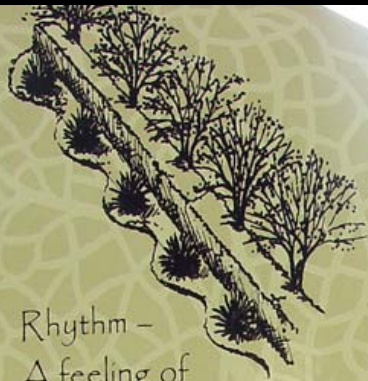
Do you need physical barriers? Would you like to direct people or traffic in a certain way?

Do you need physical barriers? Would you like to direct people or traffic in a certain way?

Do you need physical barriers? Would you like to direct people or traffic in a certain way?

Do you need physical barriers? Would you like to direct people or traffic in a certain way?





Rhythm –
A feeling of
movement created by
recurring patterns.



Proportion – The way design
elements relate to each other
or to the whole.



Emphasis – A
point, such as a
fountain or



Texture –
Surface quality,
both visual and

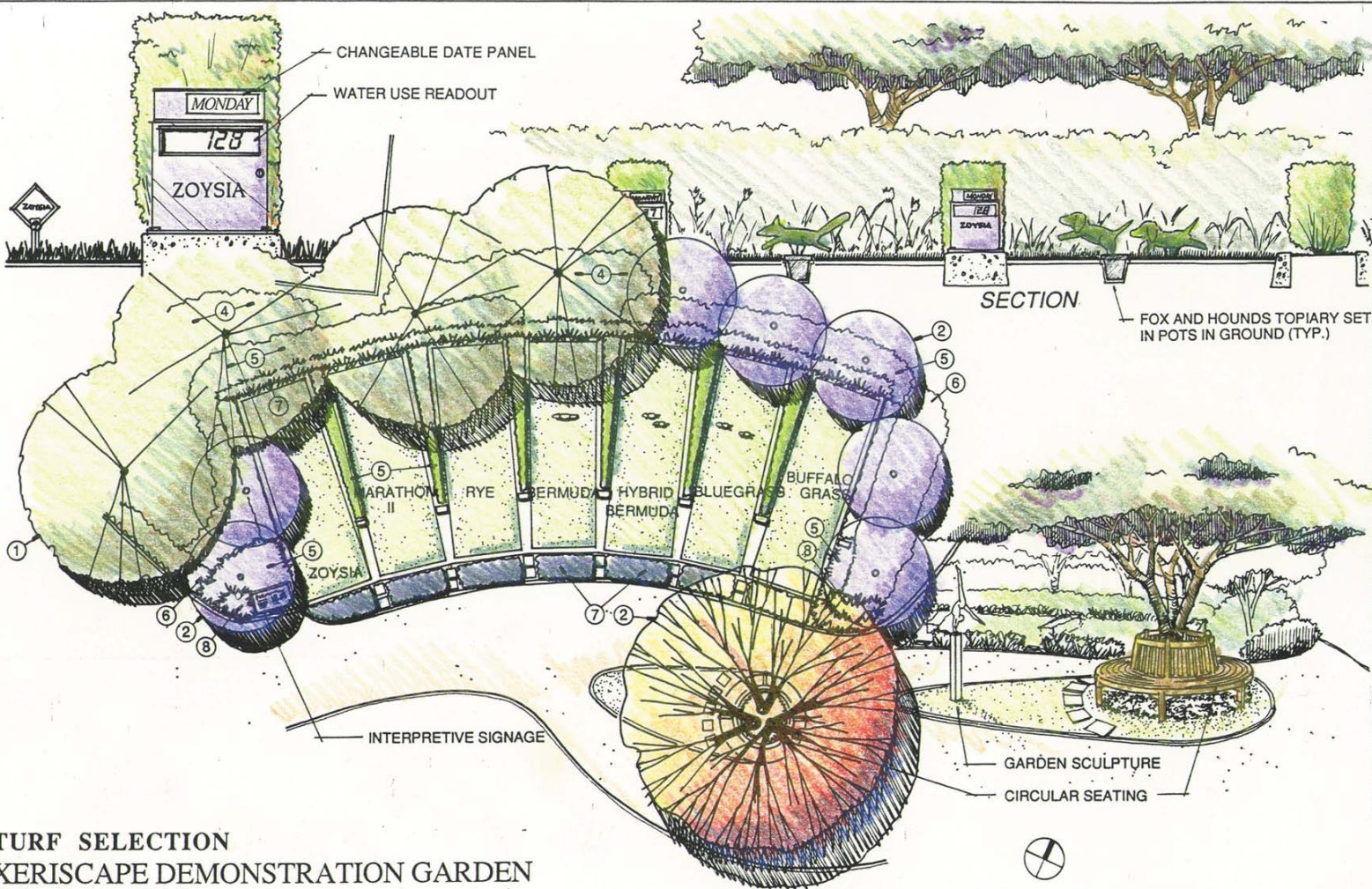


Think ahead.

Don't choose plants that may eventually take over your house.



Towering palms usually look good and feel better at the



TURF SELECTION
XERISCAPE DEMONSTRATION GARDEN
 at CUYAMACA COLLEGE

SCALE: 1"=10'-0"





Gallons Used
This Month

700

Gallons Used
This Month

630



Gallons Used
This Month

560

Gallons Used
This Month

560

















2007.11.15





















































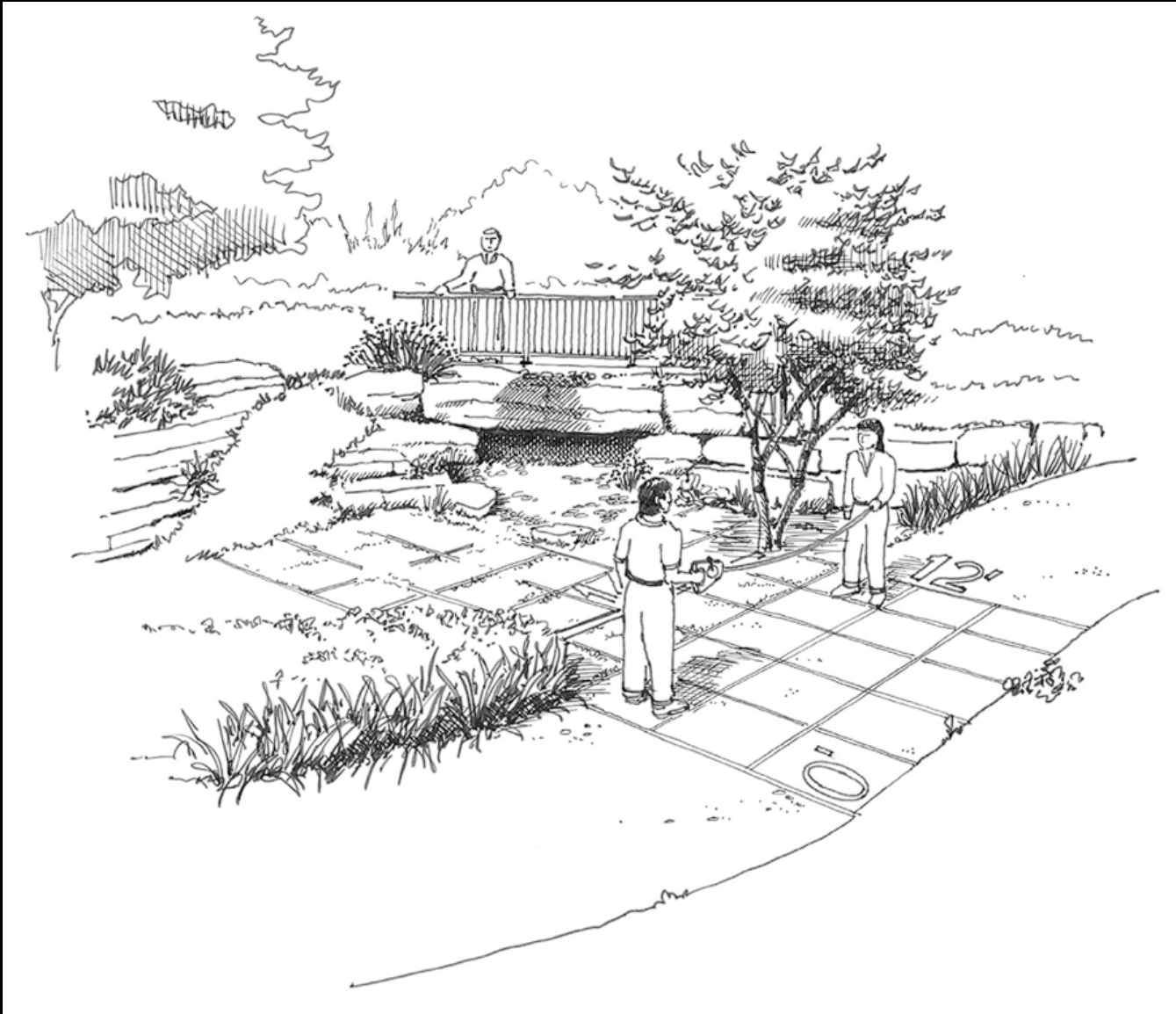










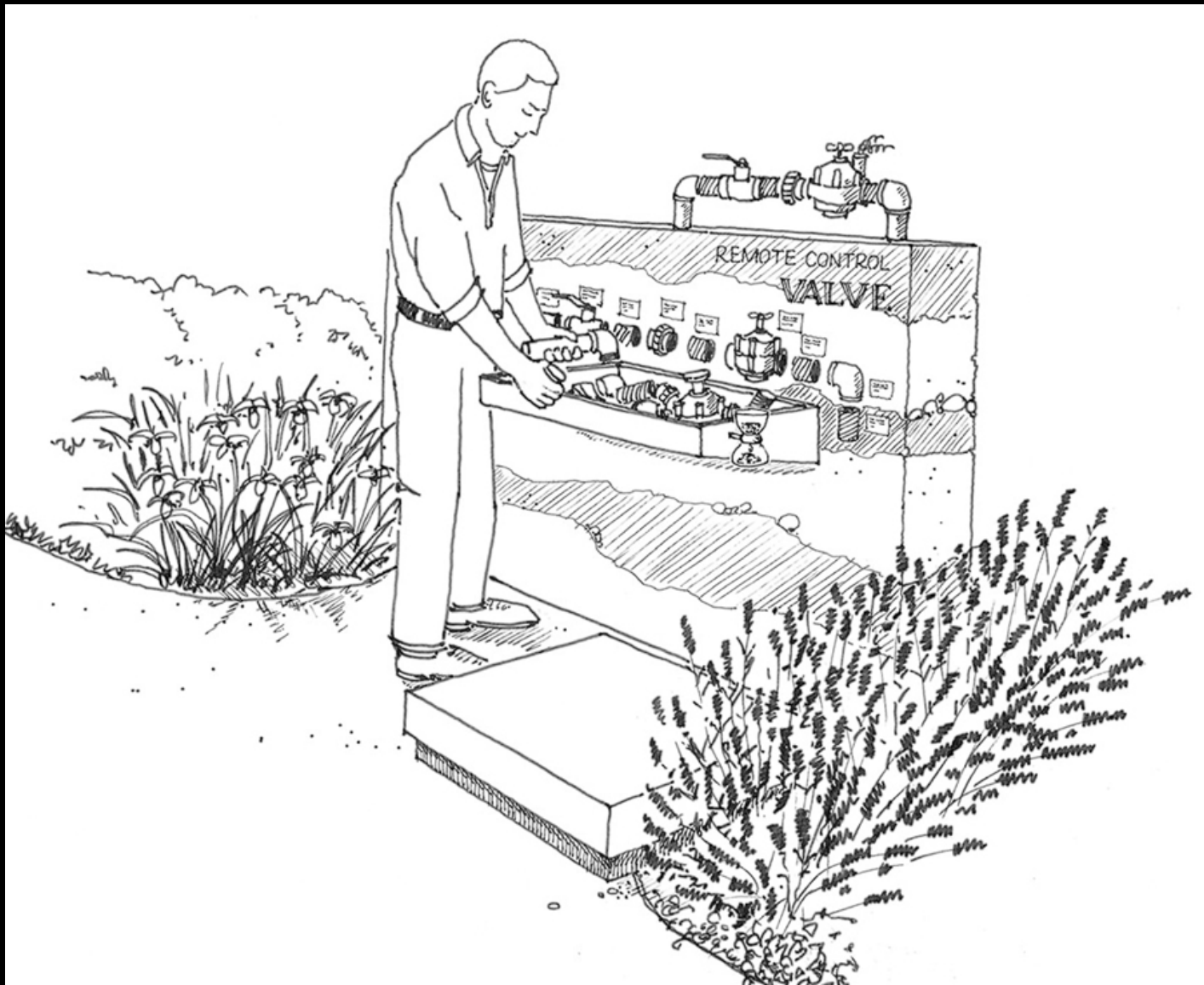




















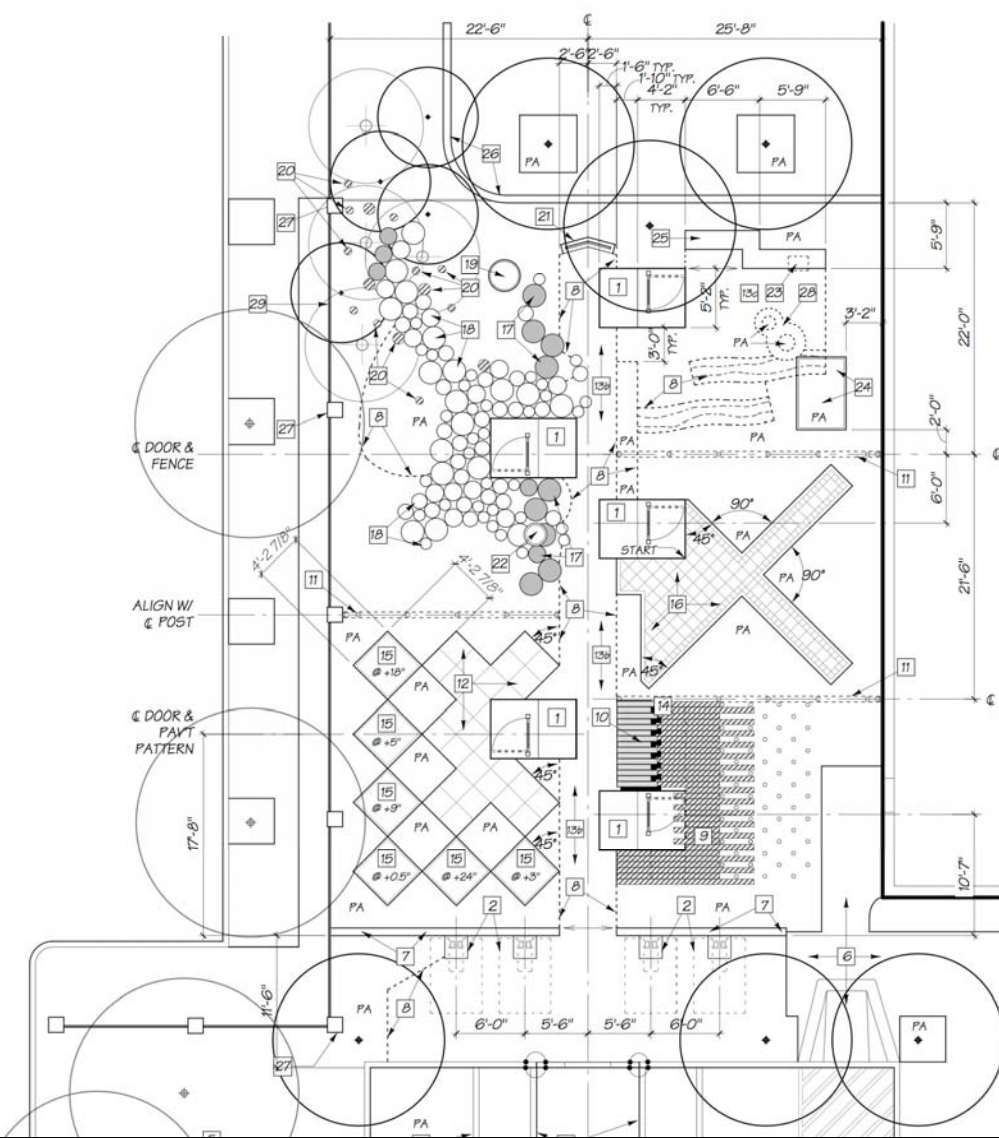






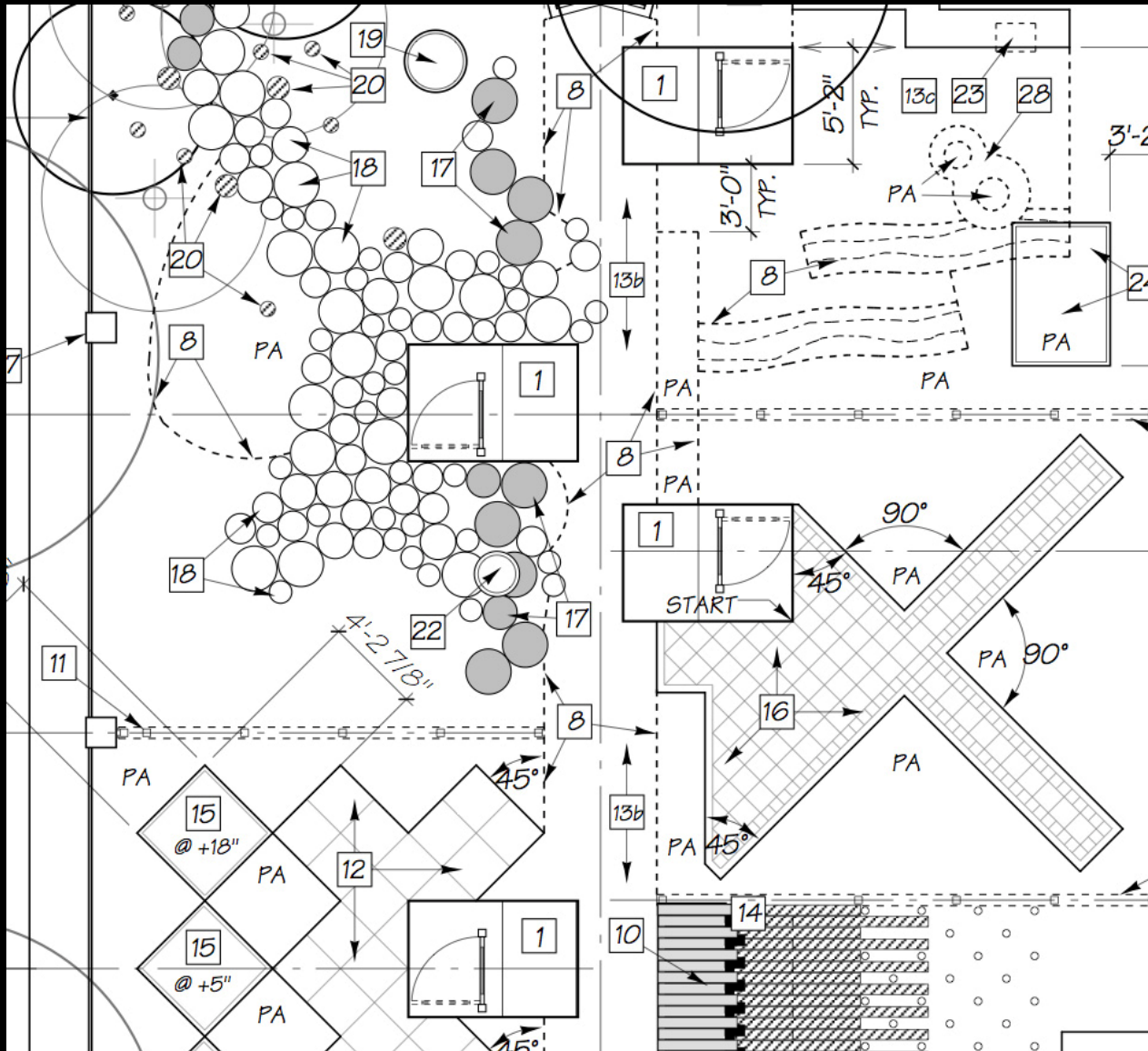


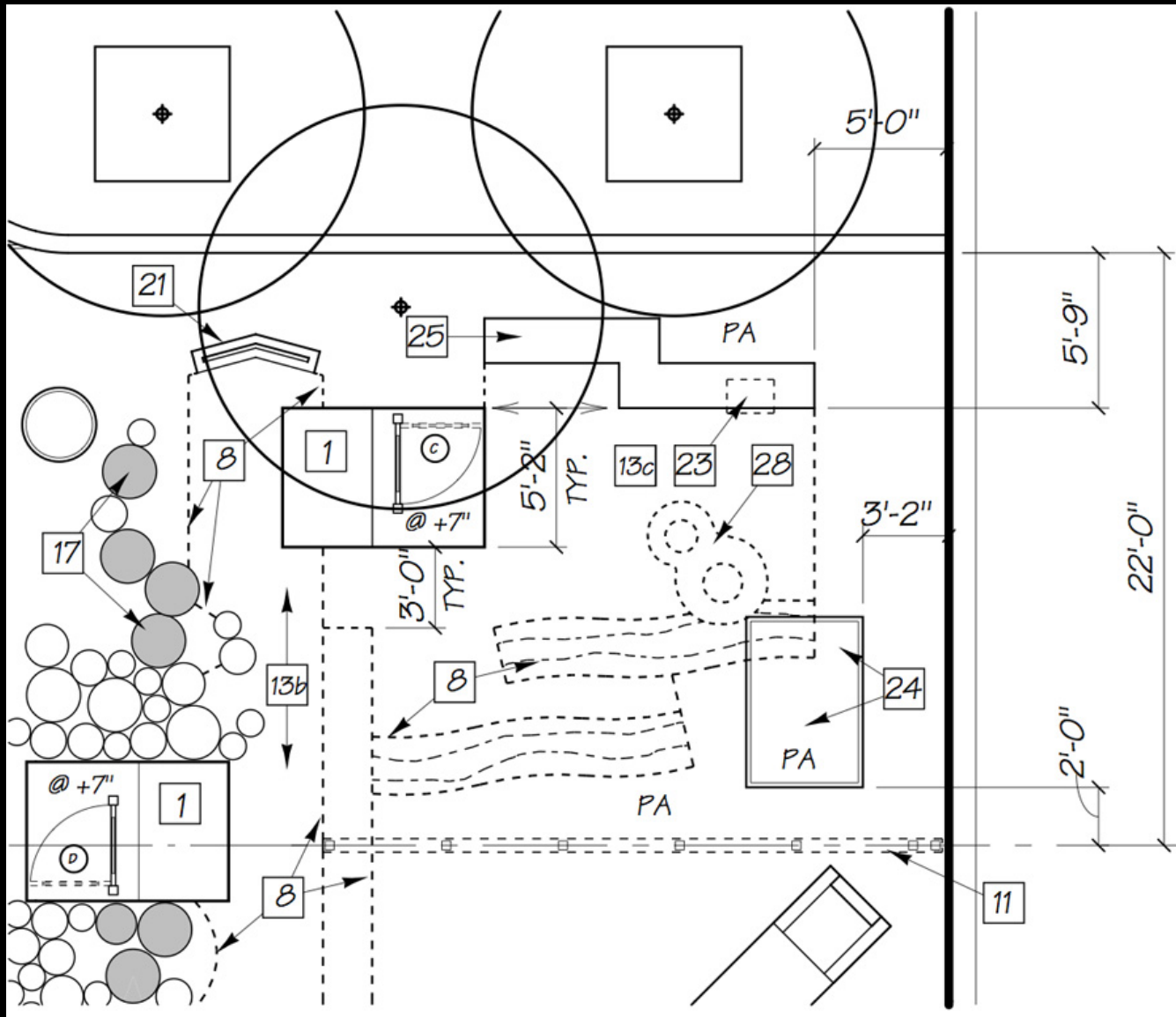




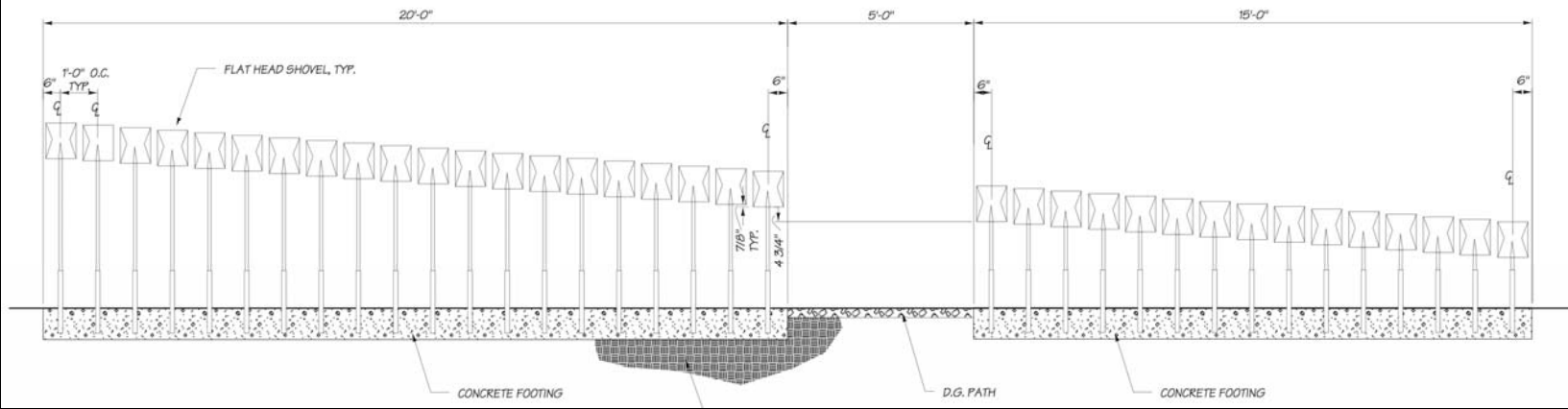
CONST

- 1 CON
- 2 SHA
- 3 TUR
- 4 PER
- 5 EXIS
- 6 EXIS
- 7 DES
- 8 RED
- 9 WOC
- 10 WOC
- 11 WOC
- 12 ARC
- 13 STA
- 14 EXIS
- 15 RAK
- 16 1' SO
- 17 LOG
- 18 ROU
- 19 BIR
- 20 BIR
- 21 STA
- 22 BUT
- 23 BBG
- 24 ELE

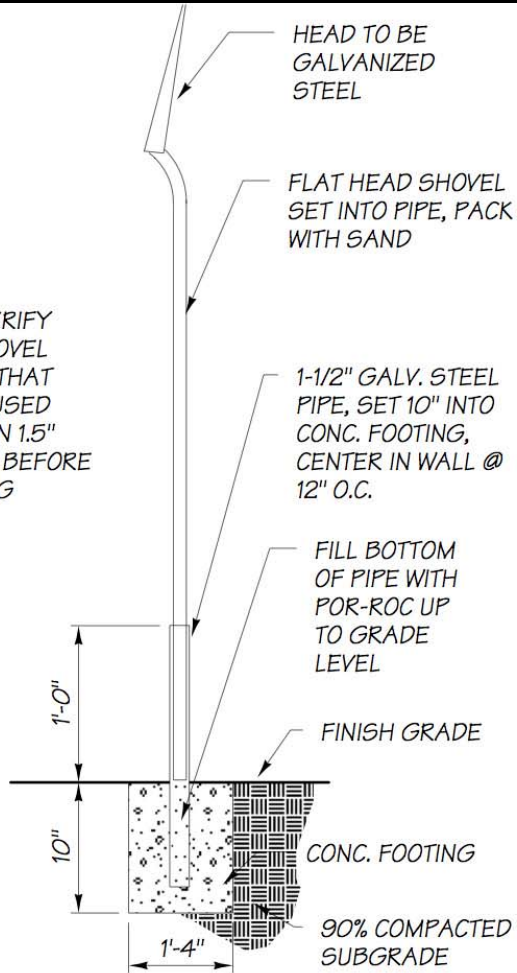




ACROSS THE D.G. PATH FROM EACH OTHER.



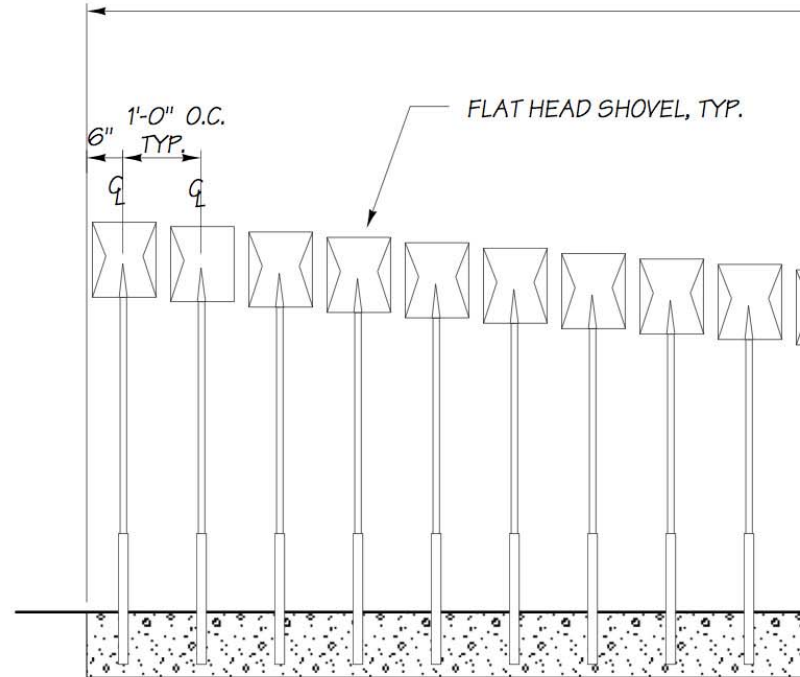
NOTE: VERIFY THAT SHOVEL HANDLE THAT WILL BE USED WILL FIT IN 1.5" DIA. PIPE BEFORE ORDERING



A SHOVEL WALL SECTION

1"=1'-0"

4'-0"



B

SHOVEL WALL ELEVATION

2'-6"









